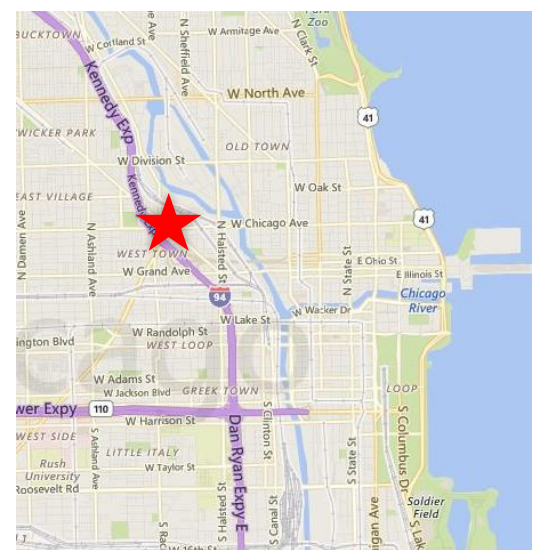


# RETAIL SPACE FOR LEASE

**805 N. Milwaukee**  
**Chicago, Illinois 60642**  
**1,350 SF**



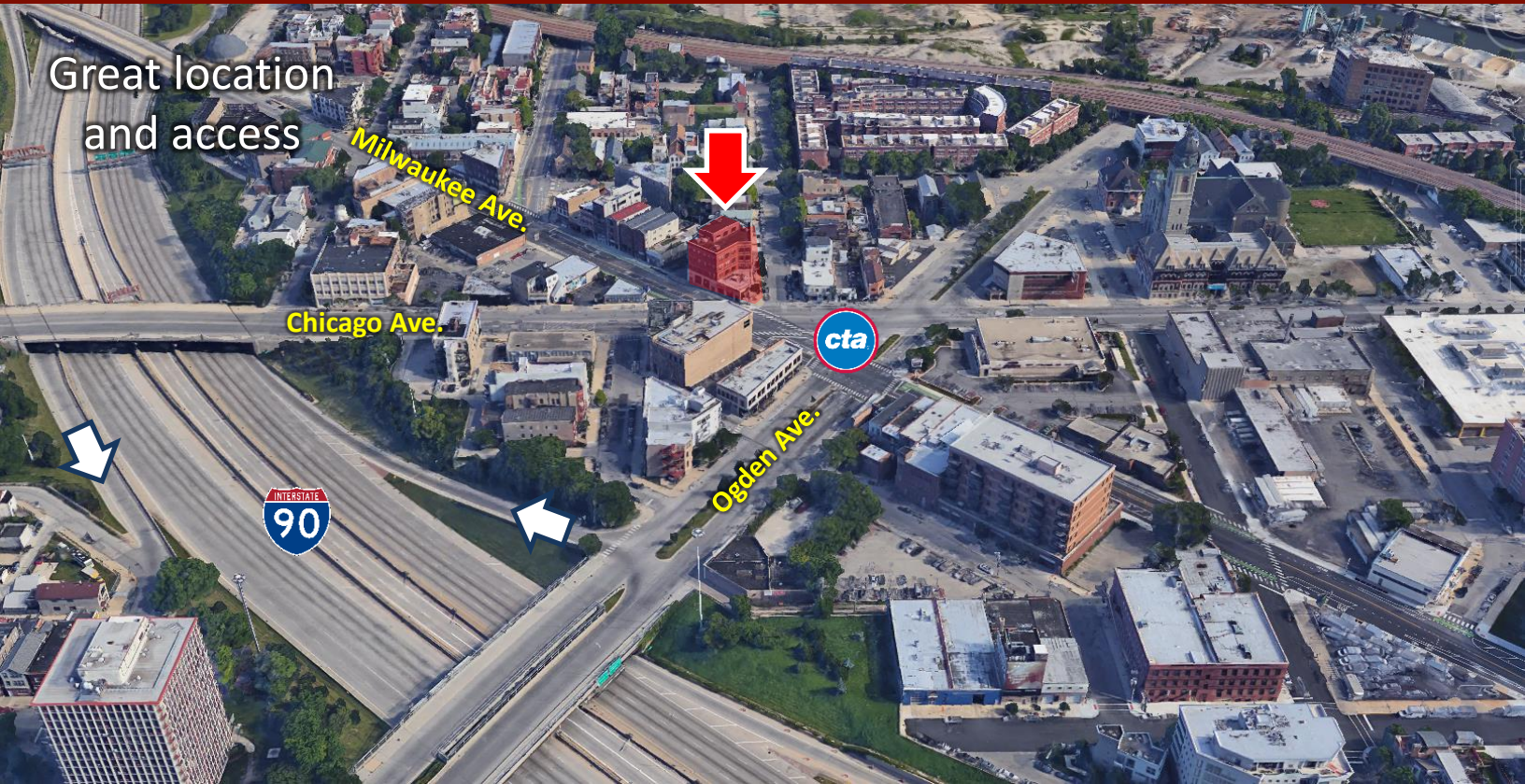
- 1,350 SF retail space on Milwaukee Ave.
- Renovated mixed-use building ideally located at the Milwaukee/Chicago/Ogden intersection
- Signalized intersection
- Centrally located close to CBD, Wicker Park, West Loop.
- Easy access to I-90
- Adjacent to blue Line subway stop
- Off-street parking available
- Strong area co-tenancy





# 805 N. Milwaukee Ave., Chicago, Illinois

Great location  
and access



Bus stop in front and  
Blue line subway  
adjacent





805 N. Milwaukee Ave., Chicago, Illinois

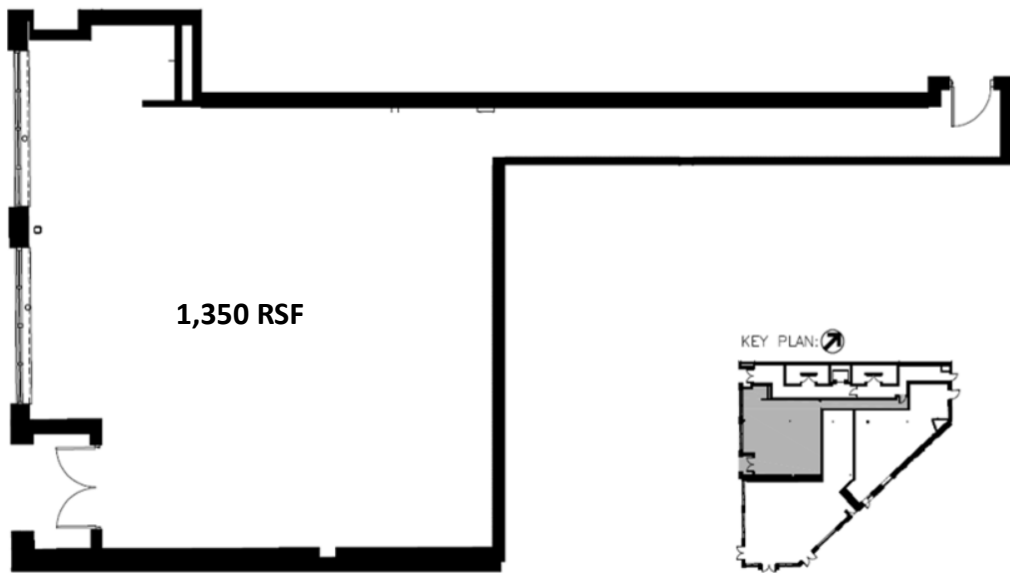


Joe Padorr 312.316.2300 jpadorr@seneca-re.com

**SENECA**  
REAL ESTATE GROUP



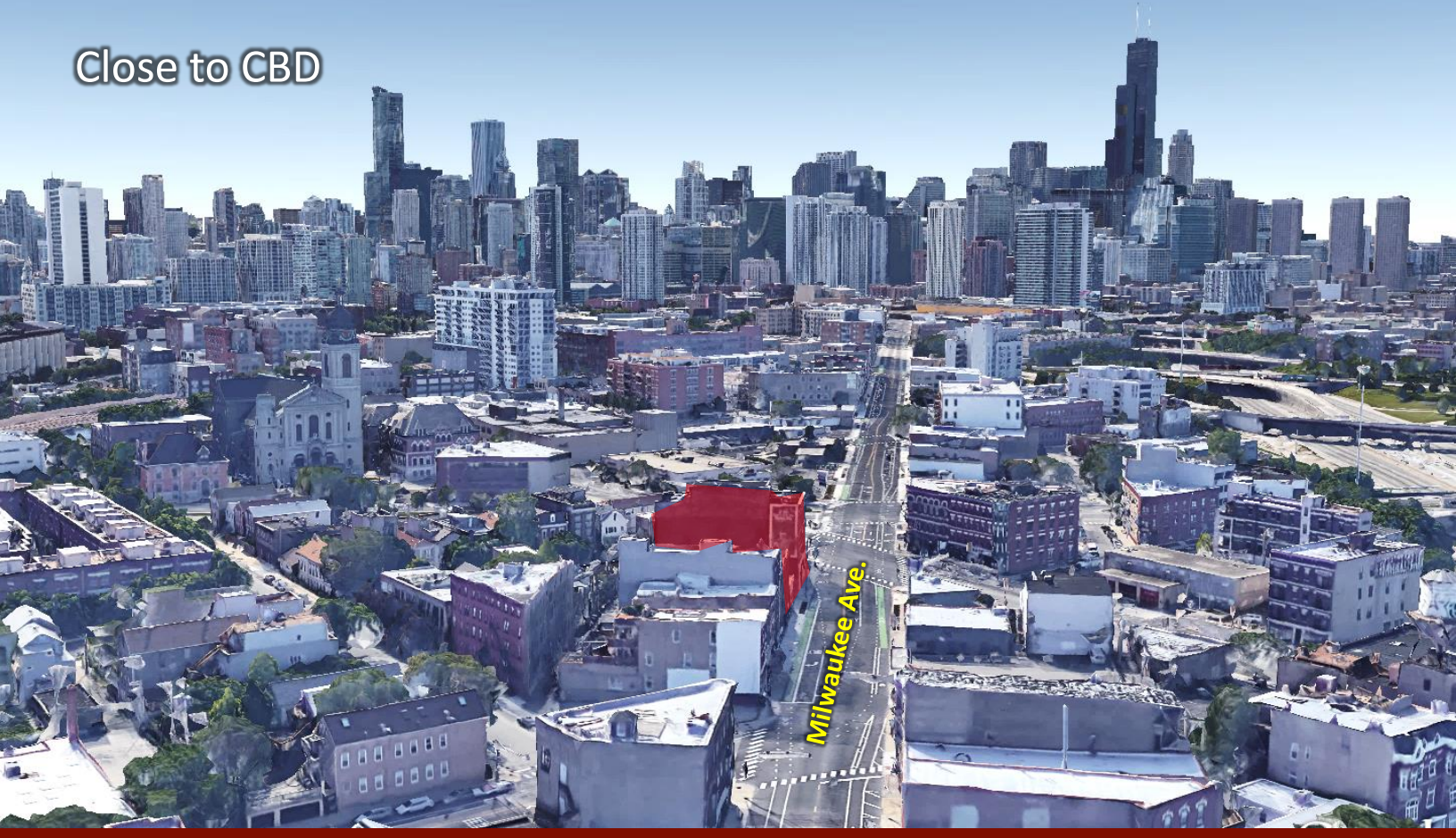
805 N. Milwaukee Ave., Chicago, Illinois



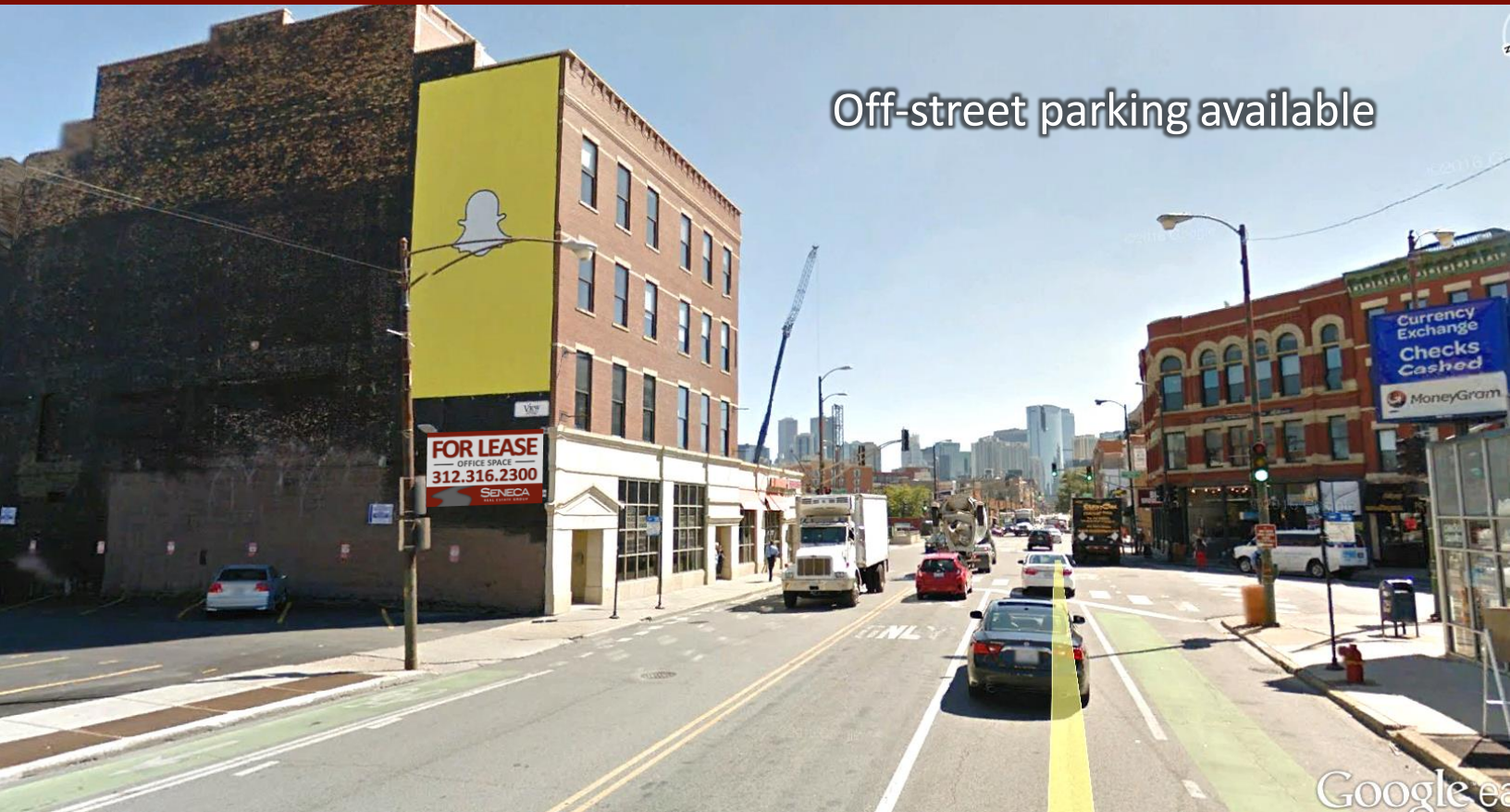


805 N. Milwaukee Ave., Chicago, Illinois

Close to CBD



Off-street parking available



Joe Padorr 312.316.2300 jpadorr@seneca-re.com

**SENECA**  
REAL ESTATE GROUP